



TECHNICAL SPECIFICATION

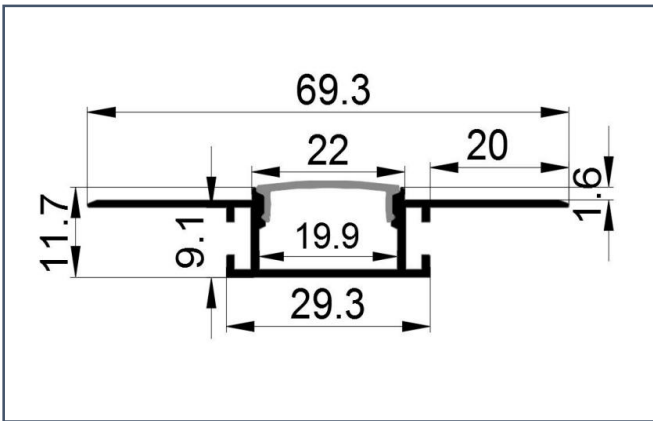
Mainly suitable for indoor lighting, simple shape, simple installation method, beautiful and generous. Made of high quality STCH-1270 aviation aluminum with silver oxidized surface, matching push-on PC mask. Push-in plug. Surface snap mount, matching stainless steel mounting clip

FEATURES

- Extruded Aluminum Construction
- Anodized matte finish
- Available In 39.37" (1m) and 78.74" (2m) Sections
- Walkover rated

DIMENSIONS

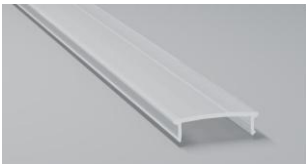
- Length: 39.37" (1m) / 78.74" (2m)
- Width (External): 2.75" (70mm)
- Width (Internal): 0.78" (20mm)
- Height: 0.47" (12mm)



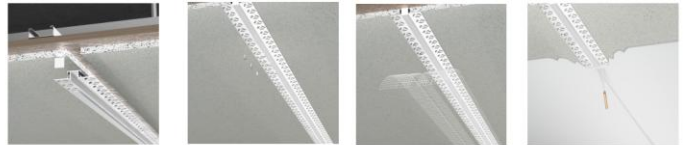
INSTALLATION STEP SCHEMATICS

ACCESSORY

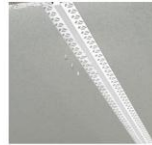
FROST WHITE LENS



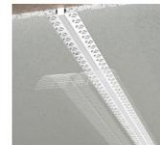
END CAP PAIR



Step 1: Installation of engineering mask and plugs



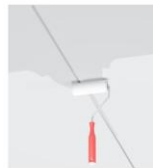
Step 2: Screwing the aluminium



Step 3: Apply anti-cracking mesh



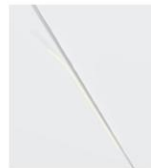
Step 4: Scrape Putty



Step 5: Paint



Step 6: Remove the engineering mask



Step 7: Stick the led strip



Step 8: Install the PC cover

1. Series
STCH-1270 = Salt Channel 1270

2. Length
1 = 1m (39.37")
2 = 2m (78.74")

3. Lens
FW = Frost White

4. End Cap
EMPTY = End Cap*

*End Cap Included

Example: STCH-1270-2-FW